



## **Habitation**

*Living*

*Shelter*

*Housing*

To survive in outer space, humans need protection from radiation. Such protection requires architecture and infrastructure to ensure habitation and accommodate various activities ranging from living and working (e.g., habitat, roads), to generating energy (e.g., solar energy equipment, storage), and facilitating communication (e.g., base stations), while relying heavily on in-situ resource utilization and a high degree of automation. In this regard, the automation scale and use of robots plays an important role in minimizing the risks for humans. Robots stand out in operating within harsh environments, such as those with extreme temperatures, radiation, and low gravity, which are typically inhospitable to humans. Their capacity in performing tasks that are repetitive, dangerous, or demand high precision makes them a perfect

**Living:** Work Sleep Eat

# ***Habitation – urbanized habitat - society***

*Living*

*Shelter*

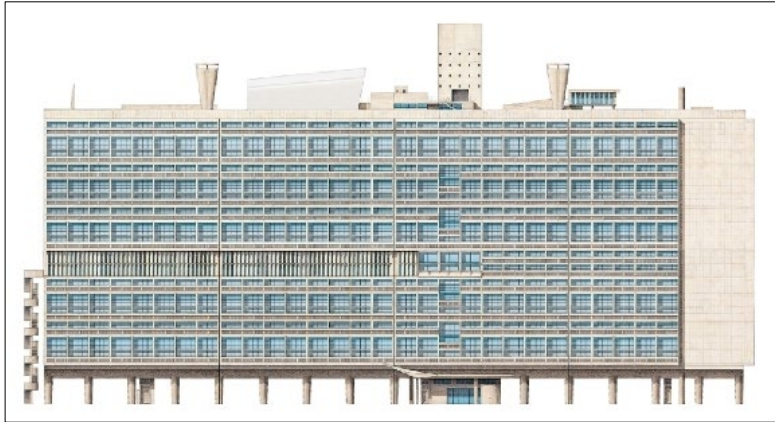
*Housing*

*?-Commune-?*

To survive in outer space, humans need protection from radiation. Such protection requires architecture and infrastructure to ensure habitation and accommodate various activities ranging from living and working (e.g., habitat, roads), to generating energy (e.g., solar energy equipment, storage), and facilitating communication (e.g., base stations), while relying heavily on in-situ resource utilization and a high degree of automation. In this regard, the automation scale and use of robots plays an important role in minimizing the risks for humans. Robots stand out in operating within harsh environments, such as those with extreme temperatures, radiation, and low gravity, which are typically inhospitable to humans. Their capacity in performing tasks that are repetitive, dangerous, or demand high precision makes them a perfect

**Living:** Work Sleep Eat

***Play?***



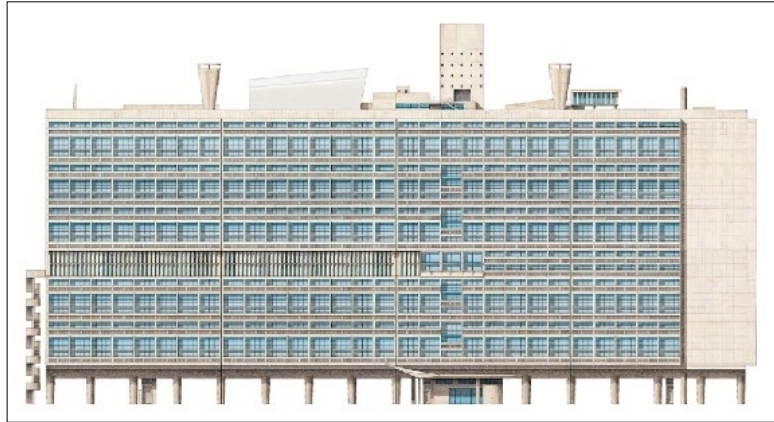
Unite d'Habitation (1952)



Habitat 67 (1967)



Silodam (2002)



Unite d'Habitation (1952)



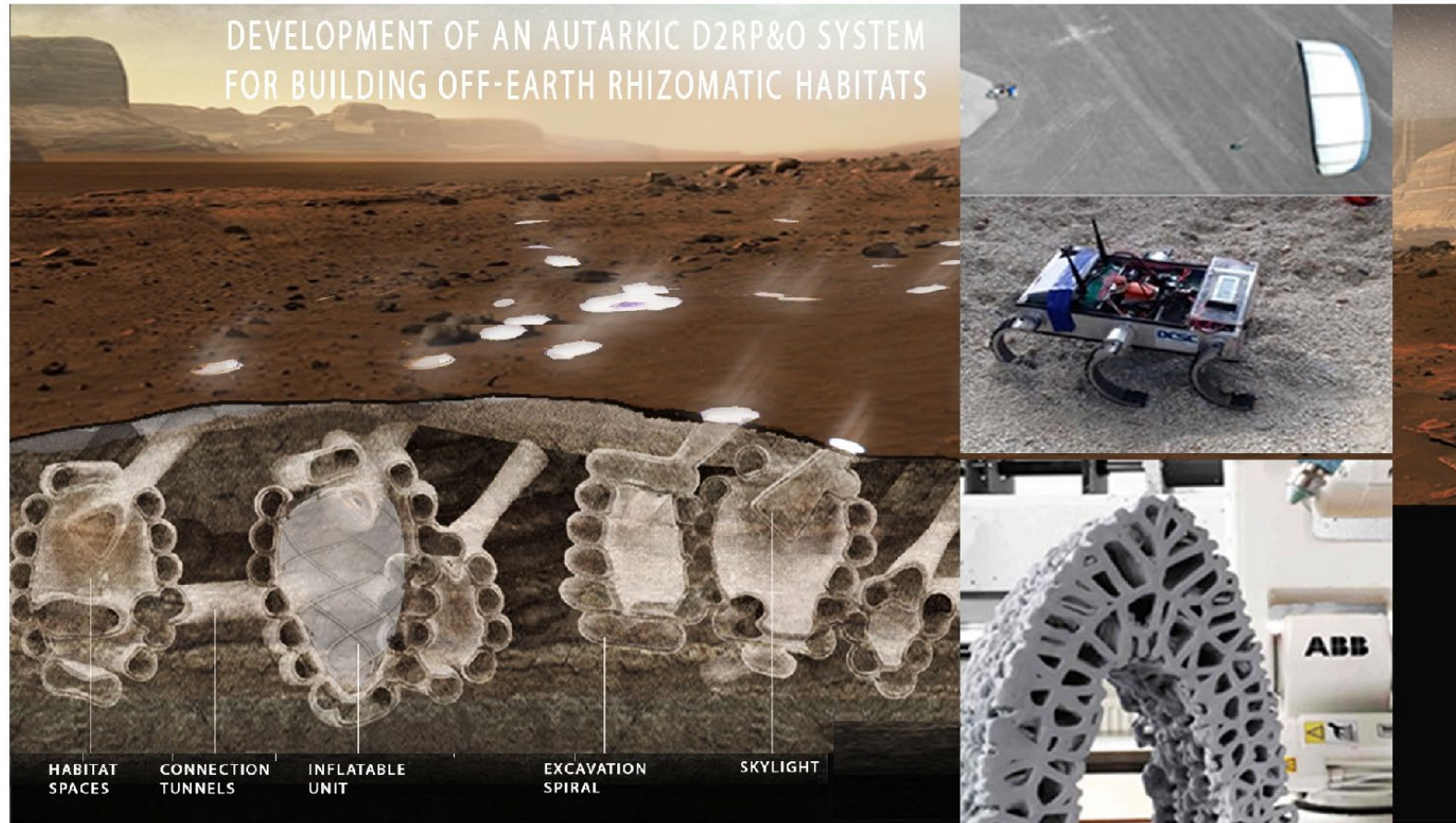
Habitat 67 (1967)



Silodam (2002)

*Complex functions  
Variety of spaces  
Variety of ambiances*





Off-Earth Manufacturing and Construction (OSIP December 2020)

How on moon do we re-define and re-design the

# *Playscape?*

Entertainment

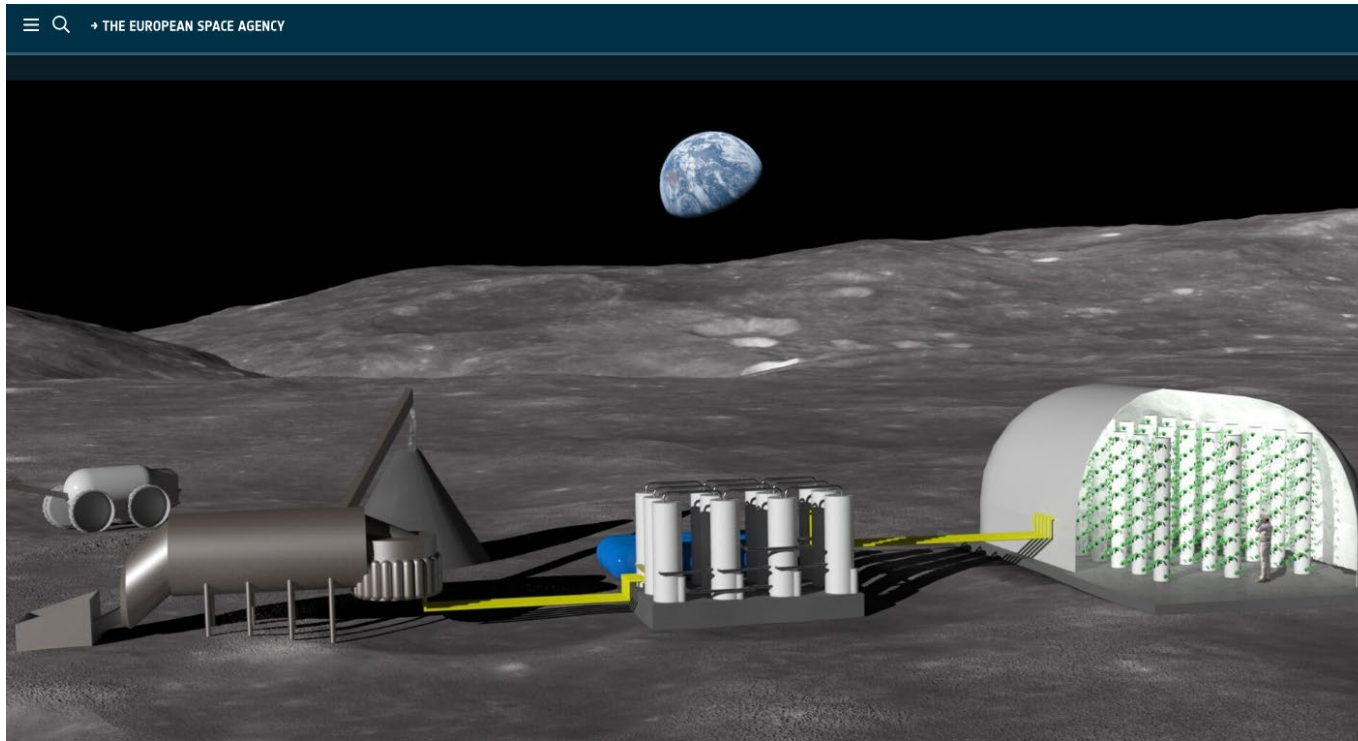
Leisure

Recreation

*In what form? = sports facilities, VR parks, furniture workshops, zero-gravity clubs, crescent-earth watching?*



One of the possibilities?



## Farming on the Moon

22/02/2023 13363 VIEWS 197 LIKES 476077 ID

LIKE

DOWNLOAD ▾

DETAILS

RELATED

Sooner or later, settlers on the Moon will have to become farmers. A new ESA Discovery project led by Norway's Solsys Mining is looking into the treatment of lunar soil to create fertiliser for growing plants.

# The Architectural Review

ESSAYS BUILDINGS PLACES ARCHITECTS ARCHIVE COMPETITIONS FILMS PODCASTS AWARDS STUDENTS MAGAZINES SHOP

## Leisure as an architectural problem

| DECEMBER 1938 | BY DONALD PILCHER | ESSAYS

'It is the factory which brings the complete dissociation of work from leisure'

'A National Park is defined as being "an extensive district of beautiful wild landscape, strictly preserved in its natural aspect and kept or made widely accessible for public enjoyment and open-air recreation.'

*How is humans' connection to other humans*  
*How is humans' connection to nature and open-air sports?*  
*How are humans on moon psychologically healed within sealed spaces?*

# How the *Playscapes*

play social roles in certain forms

are implemented spatially (materials and structures)

accommodates the cultures, customs and identities (genders, races) of diverse users - Mooners

get benefit from the moon landscapes