

# **Workshop, Symposium & Precedents**

## Awareness & Refreshments

Existing technology

Scripting logic

Existing research

Computational methods

Developed technique/ method

Tryouts

## D2RP&A Reflection

### Why Voronoi?

From

Unconventional design  
Why not columns and beams

To

Flexibility and adaptability  
Structural strength

## D2RP&A Reflection

# New Form of Construction

From

Focusing on mass production

To

Utilization of unique conditions

# Tangibility of Moon Habitat

multi-disciplinary knowledge in fulfilling multi-perspective life necessities

*energy (food & wind), materials, career and commerciality*

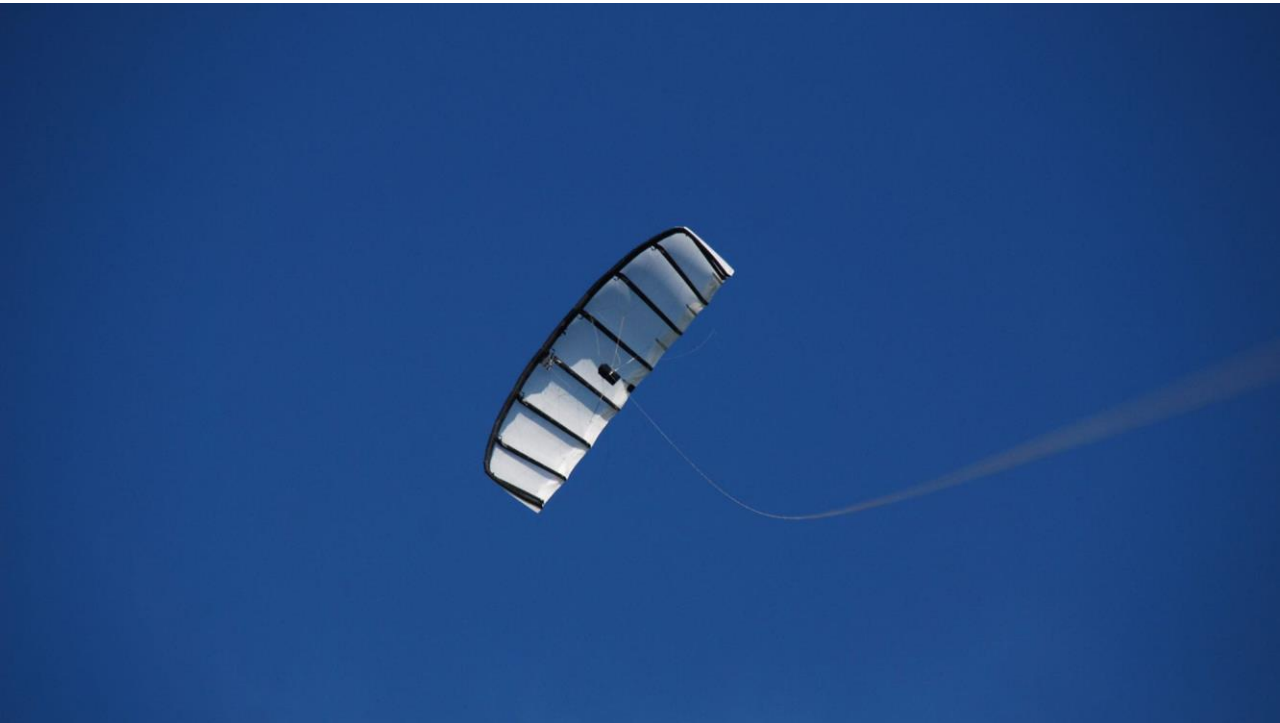
## Symposium Reflection

### Lunar Base by Hassell Studio



Inspirational construction method

## Kitepower



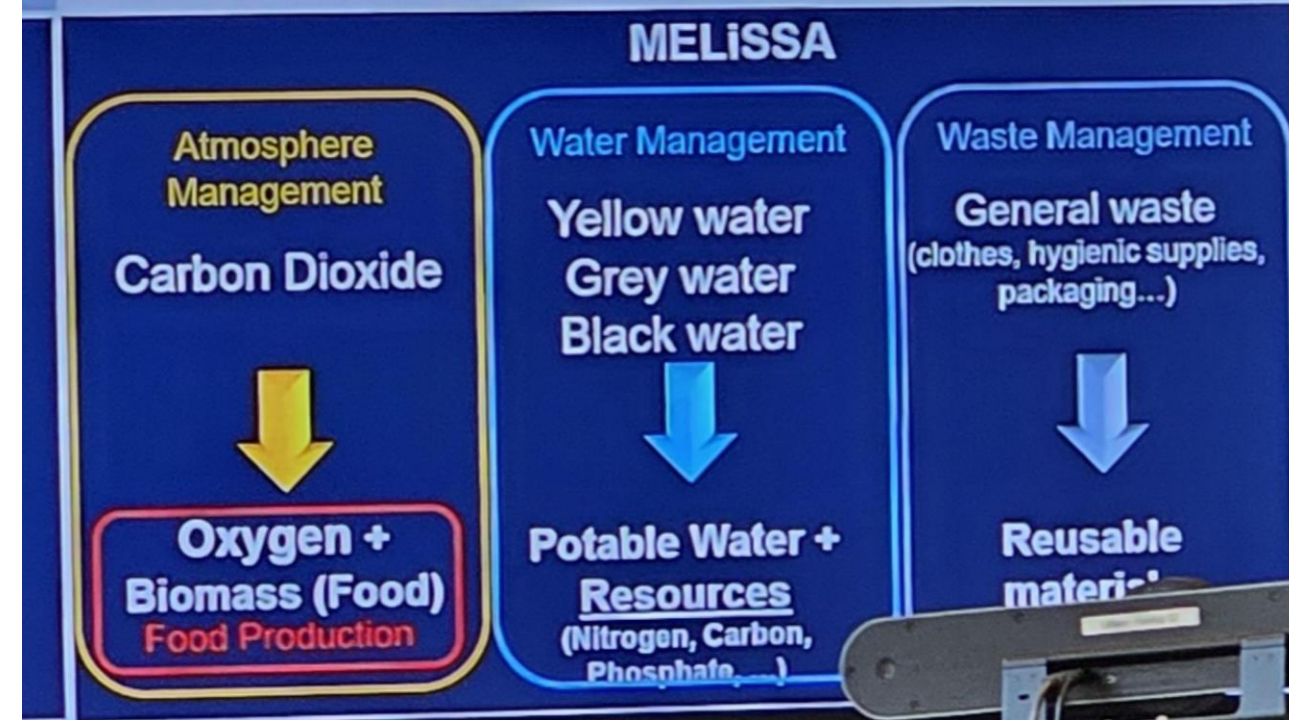
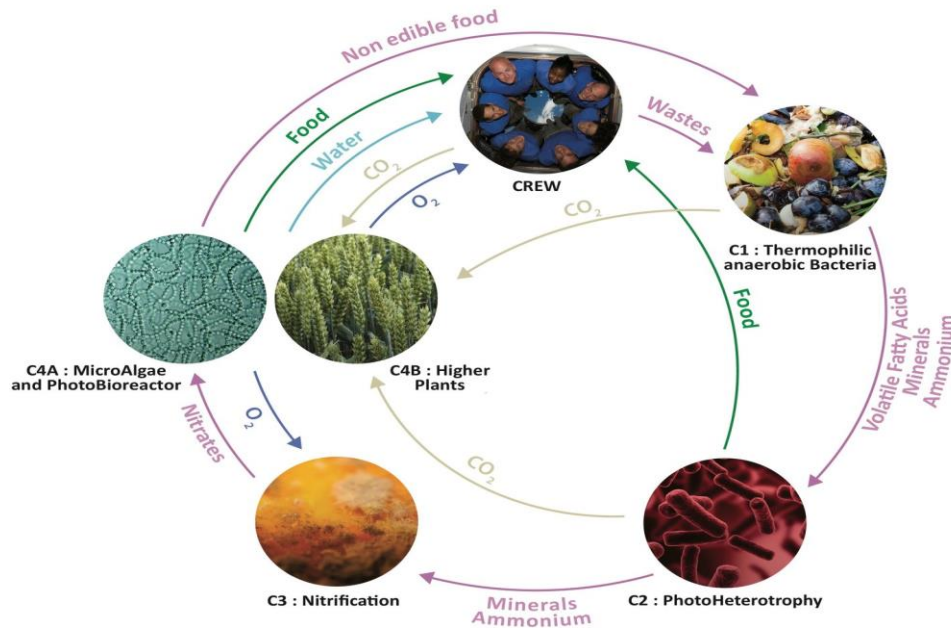
### Challenges of wind energy on Mars

- Very thin atmosphere (1% of that on Earth)
- Occasionally high wind speeds & sand storms
- Strong diurnal fluctuations (day: wind, night: little wind)
- Strong radiation
- High degree of automation required
- High degree of reliability required
- Mission budgets for mass and volume are tight

Very thin atmosphere doesn't mean it cannot be used

# Symposium Reflection

## MELiSSA life support system



Resources as a cycle not negligible in space



anna\_talvi

Follow

Message



31 posts

824 followers

865 following

**Anna Talvi**

Science, technology and engineering

Microgravity-wear

PhD candidate at UCL Bartlett in partnership with European Space Agency

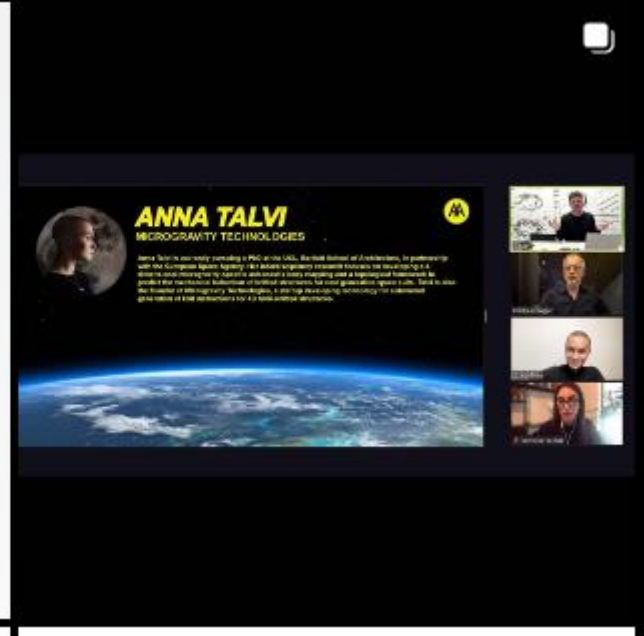
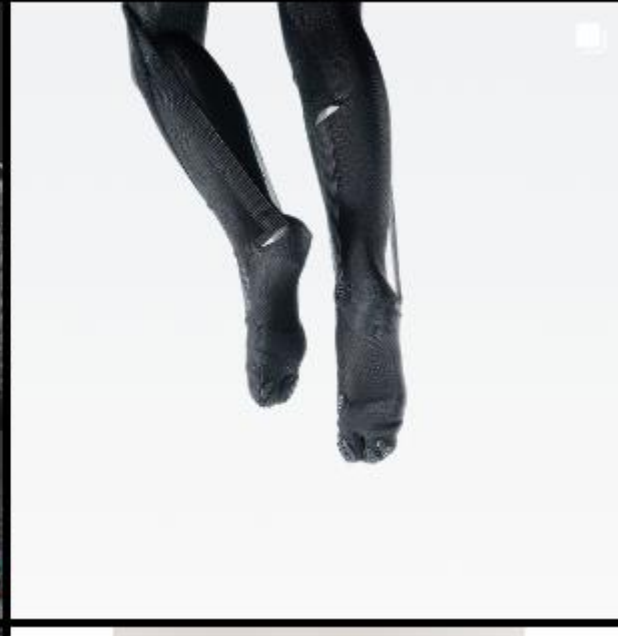
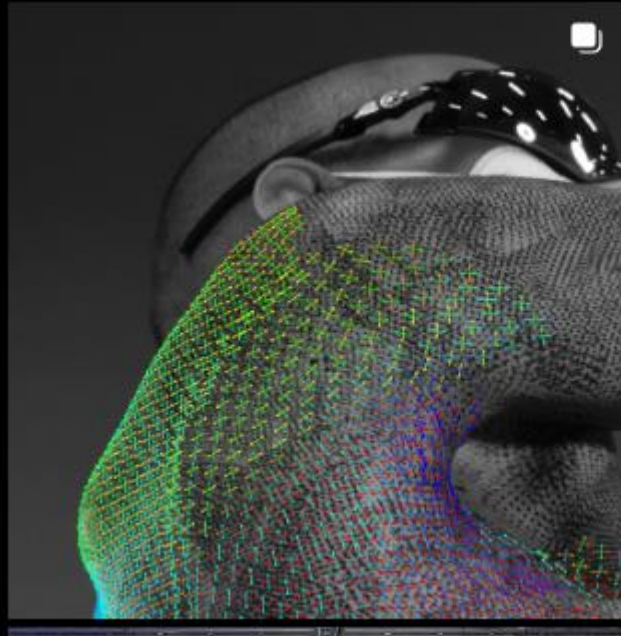
founder of 4D knit startup

Royal College of Art alumna '18

Followed by [jprobinsondesign](#)

POSTS

TAGGED



# Precedents

China: making moon on Earth  
China: making Earth on moon

Lunar hotel & amusement park  
*Disneyland: let's make one*

Temporality vs Permanency

The Doomsday  
*A shelter project for the illuminatis*

A neutral working-oriented society  
*(robotic society?)*  
*Will there be an architecture of certain identity?*  
*Sinagogue, skateboard park*

Lunar habitat  
*City of climbing gyms*